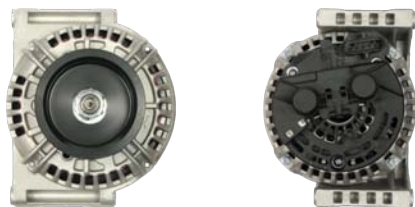


Poszerzyliśmy ofertę o następujące produkty naszej marki:



### A0260

**Cross:** Bosch 0124655014, 0986049780  
**Hc Parts** CA1939IR, Daf 1649066, Delco DRA0403  
**Size B 97, Size C 60, Voltage 24, Amp. 110**  
**For:** BOVA, DAF, SOLARIS



### A0263

**Hc Parts** CA1209IR, Cargo 111979, 111890  
**Size B 56, Size C 35, Voltage 12, Amp. 90**  
**For:** MERCEDES BENZ, MERCEDES BENZ TRUCKS & BUSES



### A0266

**Cross:** Bosch 0124515088, 0986045380  
**Hc Parts** CA1752IR, Cargo 113877, Delco DRB5380  
**Size A 31, Size B 70, Size C 58, Voltage 12, Amp. 120**  
**For:** MERCEDES BENZ



### A0261

**Hc Parts** CA1912IR, Cargo 114109  
**Size A 25, Size B 14.5, Size C 61, Voltage 12, Amp. 180**  
**For:** AUDI, SEAT, SKODA, VW



### A0264

**Cross:** Bosch 0123320047, 0123320062, 0986040170  
**Hc Parts** CA1090IR, Cargo 113442, Delco DRB0170  
**Size A 26, Size B 56, Voltage 12, Amp. 90**  
**For:** MERCEDES BENZ



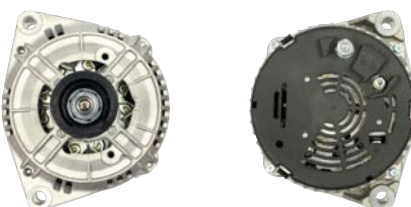
### AR0036

**Cross:** Bosch F00M131634, F00M131639  
**Cargo** 235326, Woodauto WRT66917  
**Voltage 12, Amp. 150, O.D. 110,5, Shaft L. 158,2**  
**For:** Bosch 0124525100, 0124525135, 0124525044, 0124525108, 0124525132, 0124525049, 0124525076, 0124525070, 0124525082, 0124525136, 0124525081 ...



### A0262

**Cross:** Bosch 0123510038, 0123510049, 0123510080  
**Hc Parts** CA1299IR, Cargo 111883, Delco DRA3866  
**Size A 38, Size B 55.2, Voltage 12, Amp. 115**  
**For:** MERCEDES BENZ



### A0265

**Cross:** Bosch 0123510012, 0123510039, 0123510051  
**Hc Parts** CA1057IR, Cargo 112530, Delco DRA8260  
**Size A 36, Size B 55.5, Voltage 12, Amp. 120**  
**For:** CHEVROLET, DAEWOO, MERCEDES BENZ, SSANGYONG



### ARE0109

**Cross:** Bosch  
**Voltage 12**  
*B-Circuit*  
*Soft Start 30 % LRC 5 sec*  
*Field Shorted Circuit Protection*  
*L Terminal Drivers Choke*  
*Under / Over Voltage Indication*  
*DFM Function*  
*Self exciting function*

Zapraszamy do korzystania z e-sklepu [www.as-pl.com](http://www.as-pl.com)

Poszerzyliśmy ofertę o następujące produkty naszej marki:



### ARE0114

**Cross:** Bosch F00M145330

**For:** Bosch 0124325134, F004315100, 0124325164

B-Circuit  
Soft Start 30 %  
LRC 5 sec  
Field Shorted Circuit Protection  
Under Voltage Indication  
Over Voltage Indication  
DFM Function



### ARE3090

**Cross:** Valeo

**Voltage** 12

B-Circuit  
Soft Start 30 %  
LRC 5 sec  
Field Shorted Circuit Protection  
Under Voltage Indication  
Over Voltage Indication  
DFM Function  
Self exciting function



### ARE5089

**Cross:** Mitsubishi

**Voltage** 12

A-Circuit  
Soft Start 30 %  
LRC 5 sec  
Field Lamp Shorted Circuit Protection  
Under Voltage Indication  
Over Voltage Indication



### ARE5091

**Cross:** Mitsubishi IM318, A866X31882  
**Cargo** 234541, **Mobilettron** VR-H2009-62

**Voltage** 12

**For:** Mitsubishi A5TA4891, A5TA1091, A5TA1091ZC, A5TA4891ZC, A5TA1191, A5TA1191ZC

A-Circuit  
Under Voltage Indication

For use : Honda



### ARE5094

**Cross:** Mitsubishi

**Voltage** 12

A-Circuit  
Soft Start 30 %  
LRC 5 sec  
Field Lamp Shorted Circuit Protection  
Under Voltage Indication  
Over Voltage Indication



### ARE6078

**Cross:** Denso 126000-1130, 126000-1320

**Cargo** 136727, **Transpo** IN442

**Voltage** 12

**For:** Denso 1022110500, 1012115570, 1002118370, 1002118622, 1002118630, 1002118620, 1002118960, 1002118632, 1002118631, 1012115571

A-Circuit  
Soft Start 30 %  
LRC 5 sec  
Field Shorted Circuit Protection  
Under Voltage Indication  
Over Voltage Indication  
63.5 Mounting



### ARE6079

**Cross:** Denso

**Voltage** 12

B-Circuit  
Soft Start 30 % LRC 5sec  
Field Shorted Circuit Protection  
Under Voltage Indication  
Over Voltage Indication  
DFM Function



### S0165

**Cross:** Bosch 0001218818, 0986015920, 9000331406  
**Hc Parts** JS568, **Delco** DRS3173, **Elstock** 25-1075

**Size** A 82.5, **Size** B 9, **Power** 2.2, **Voltage** 12,  
**No./mount. holes** 2, **No./mount. holes with thread** 2,  
**No./teeth (fits into)** 9, **rotation** CW

**For:** NISSAN



### S0294

**Cross:** Bosch 0001218153, 0986017470, 0986018611  
**Hc Parts** CS1055, **Delco** DRS7470, DRS8611

**Size** A 68, **Size** B 6, **Power** 2.2, **Voltage** 12, **No./mount. holes** 3, **No./mount. holes with thread** 0, **No./teeth** 9,  
**No./teeth (fits into)** 9, **rotation** CW

**For:** RENAULT